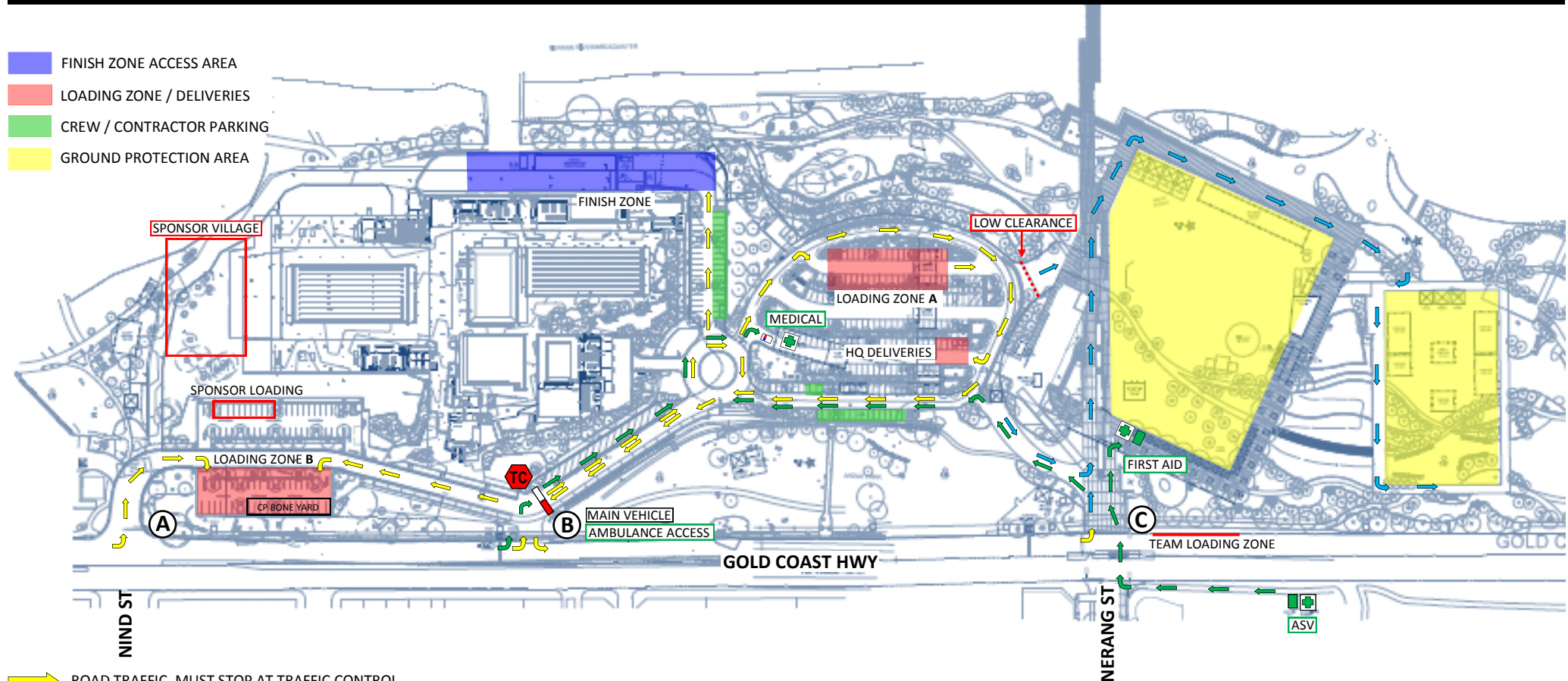


# 2014 GOLD COAST AIRPORT MARATHON

# PRECINCT TRAFFIC PLAN



→ ROAD TRAFFIC, MUST STOP AT TRAFFIC CONTROL

→ PUBLIC AREA, SPOTTER REQUIRED AT ALL TIMES

→ EMERGENCY TRAFFIC, MEDICAL TRANSPORT

TC TRAFFIC CONTROL TO LOG AND DIRECT ALL DELIVERIES TO CORRECT ZONE

— WATER BARRIER CLOSE ACCESS 5:00pm—6:00am

— TEAM LOADING ZONE, OPERATIONAL FROM FRI 4TH JULY TO SUN 6TH JULY, 20 MIN MAX, 11 CAR SPACES

The Broadwater Parklands car park will be closed to the public during the construction and deconstruction of the Gold Coast Airport Marathon Precinct from 5:00am Monday 23rd June to 5:00pm Thursday 10th July.

The main vehicle entry to the Precinct will be the Parklands car park entry marked 'B'. Access is via the south bound lane of the Gold Coast Highway. Vehicle entry A and C will be utilized only on a minor basis, additional traffic control/spotters will be on hand to manage these entry points.

Traffic entering the Broadwater Parklands will be restricted to authorized vehicles only. Traffic control will monitor Vehicle entry 'B' from 6:00am to 5:00pm. Water Barrier will be used to close access to the Parklands from 5:00pm to 6:00am. Event Security Management (ESM) will have staff in place to monitor traffic after hours.

Sponsors Loading into the Sponsor Village to use Car park opposite Loading zone B. Load in on Friday the 4th. Saturday 5th after 14:00, Load out Sunday after 14:00